



T.SHIRTS E CATLOG



[WWW CJ7UNIFORMS COM](http://WWW.CJ7UNIFORMS.COM)



Design - Nano Plus
GSM - 150
Quality - Polyester
Colors - 24

Colors Options





Quality * 350p
Poly Cotton
Body Touching Cotton

Colors Options





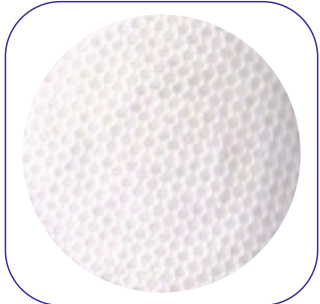
Quality * 201
GSM * 275
100% Cotton Fabric

Colors Options

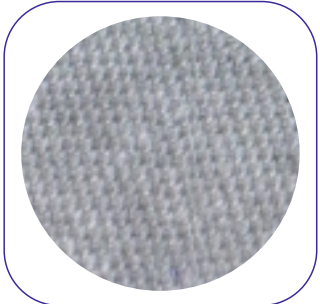
1-Navy



2-White



10-G Melange



11-Black





Quality * 375
GSM * 230
100% Cotton Fabric

Colors Options

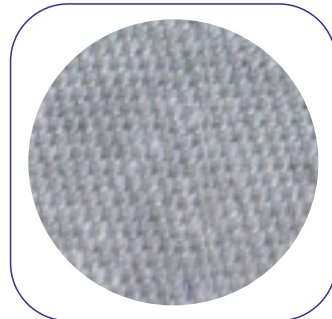
1-Navy



2-White



10-G Melange



11-Black





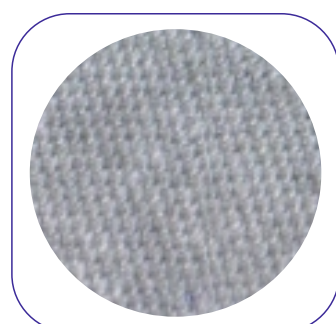
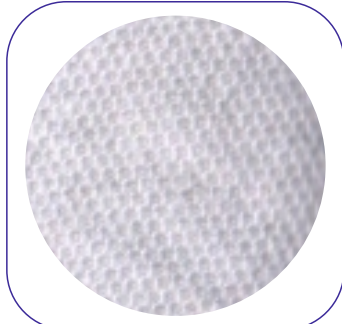
Design - 2HRI
GSM - 220
Quality - PolyCotton
Colors - 3

Colors Options

2-White



3-A Melange 10-G Melange





Quality * 250
GSM * 210
50%Poly,50%Cotton
Bio Wash Fabric

Colors Options

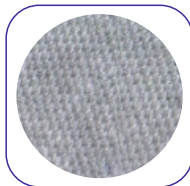
1-Navy



2-White



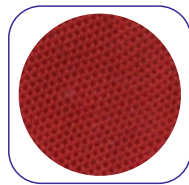
10-G Melange



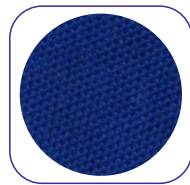
11-Black



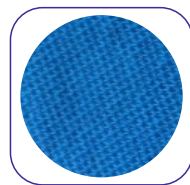
17-Red



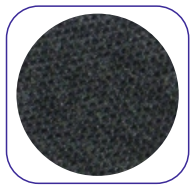
18-Royal



24-Turquoise



26-Black Melange





Quality * 251/14
GSM * 220
100% Cotton Fabric

Colors Options

1-Navy



2-White



11-Black





Design - 441
GSM - 240 - 260
Quality - 67% Cotton
33% Poly
Body Touching Cotton

Colors Options





Quality * 700
GSM * 180
Spun Blended

Colors Options

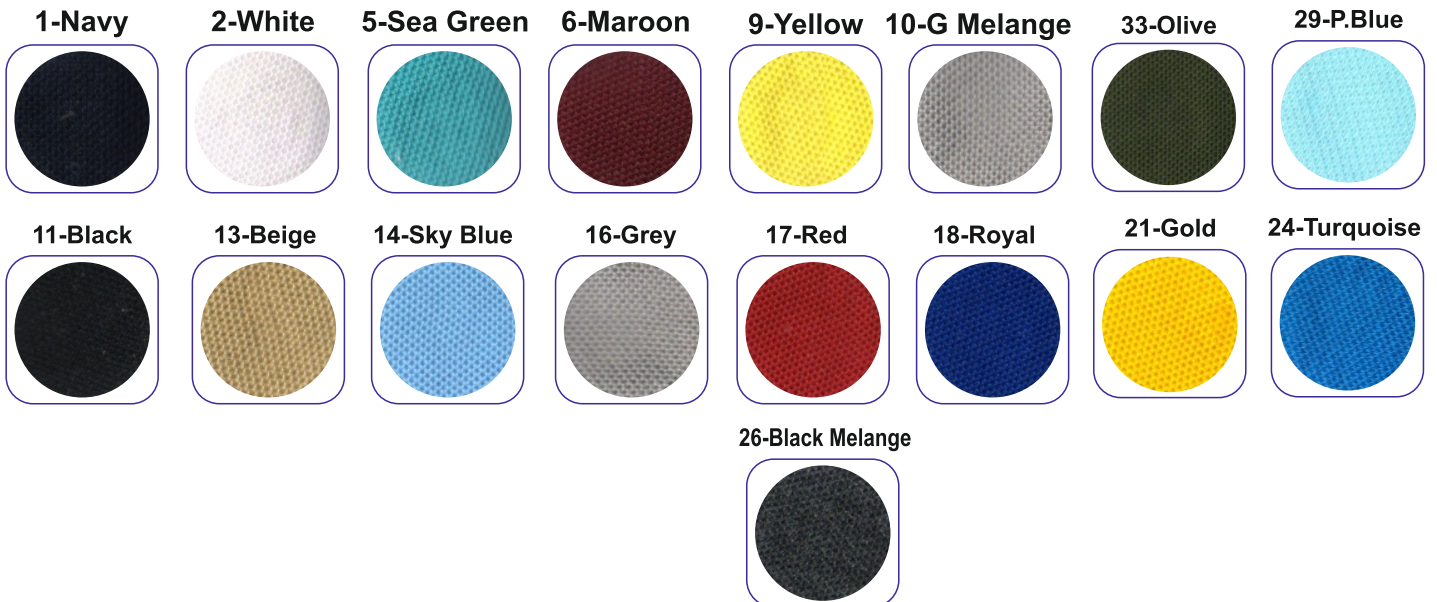




Design # 01 Mars
GSM - 240
Quality - Dri Fit Fabric
Colors - 18



Color Options





Quality * 750
GSM * 180
Micro Poly

Colors Options

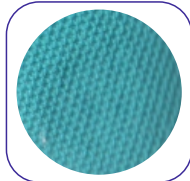
1-Navy



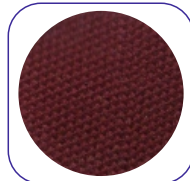
2-White



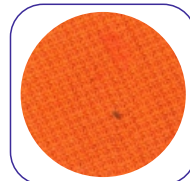
5-Sea Green



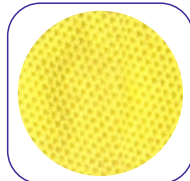
6-Maroon



7-Saffron



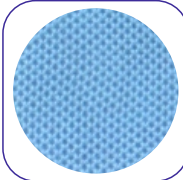
9-Yellow



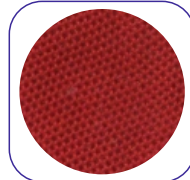
11-Black



14-Sky Blue



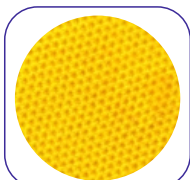
17-Red



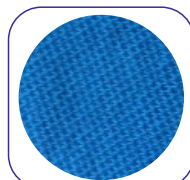
18-Royal



21-Gold



24-Turquoise



29-P.Blue





Design # 620

GSM - 130

Quality - Dry Fit Polyester
Rice Jersey

Colors - 19

Color Options





Design # 550

GSM - 220

Quality - Poly Cotton

Body Touching Cotton

Colors - 10

Color Options

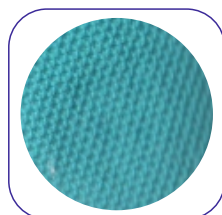
1-Navy



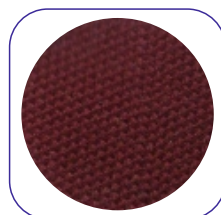
2-White



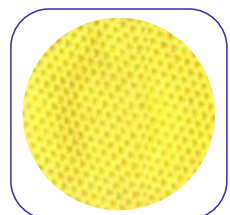
5-Sea Green



6-Maroon



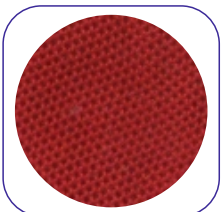
9-Yellow



11-Black



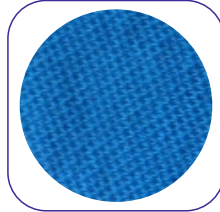
17-Red



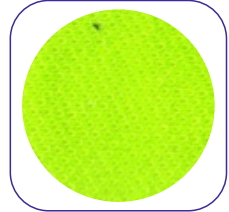
18-Royal



24-Turquoise



25-F.Green





**Design - Mercerised
Cotton**

GSM - 240

Quality - 100 % Cotton

Colors - 4

Color Options

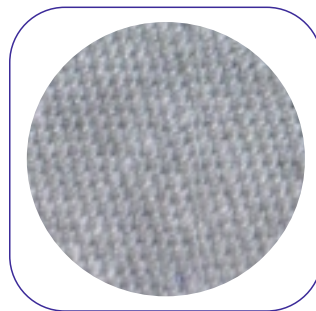
1-Navy



2-White



10-G Melange



11-Black





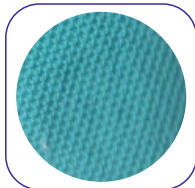
Quality * 940
GSM * 220
60%Poly 40%Cotton

Colors Options

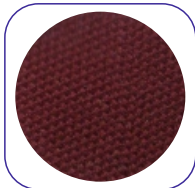
1-Navy



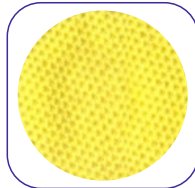
5-Sea Green



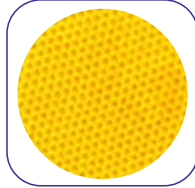
6-Maroon



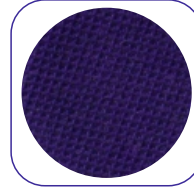
9-Yellow



21-Gold



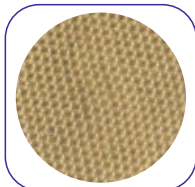
23-Purple



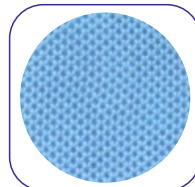
11-Black



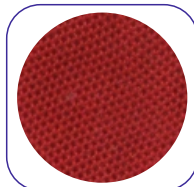
13-Beige



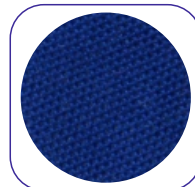
14-Sky Blue



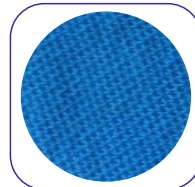
17-Red



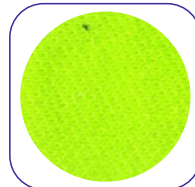
18-Royal



24-Turquoise



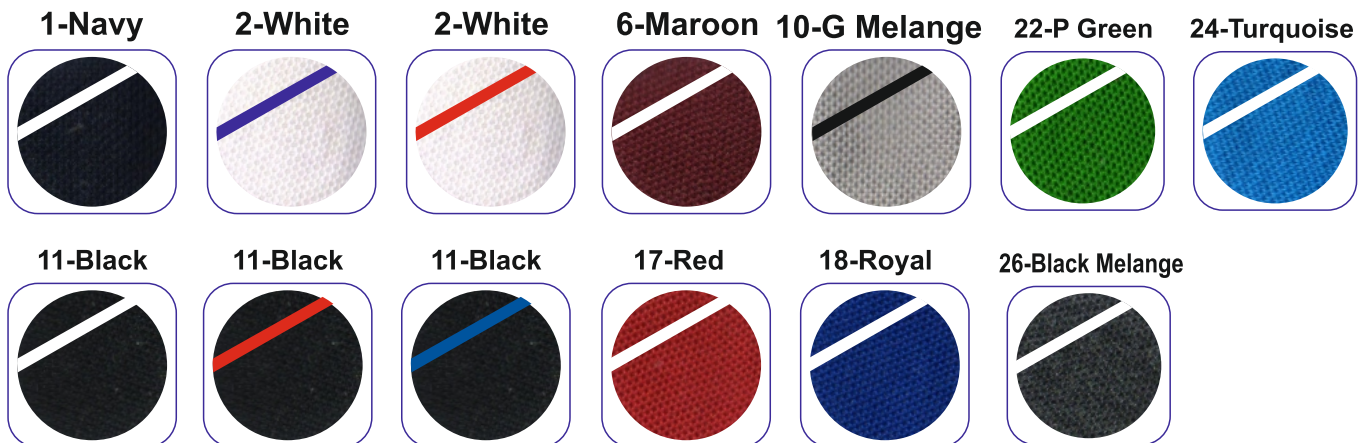
25-F.Green





Quality 053
GSM 180
Red with Tipping
60%Poly, 40% Cotton Fabric

Colors Options





Quality * 144
GSM * 220
Grey with Tipping
67% Cotton, 33% Poly Fabric
Body Touching Cotton

Colors Options

1-Navy

2-White

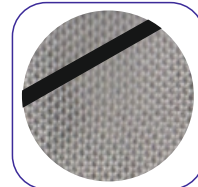
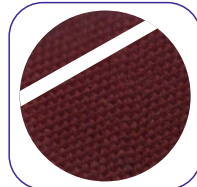
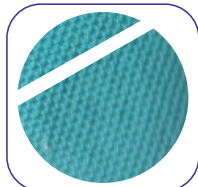
2-White

5-Sea Green

6-Maroon

10-G Melange

26-Black Melange



11-Black

11-Black

11-Black

17-Red

18-Royal

22-P Green

24-Turquoise





Quality * 007

GSM * 180

Black with Tipping

Poly Blended Fabric

Colors Options





Quality * 021

GSM * 130

Gold with Black Tipping

Polyester Fabric

Colors Options

1-Navy



2-White



2-White



5-Sea Green



6-Maroon



21-Gold



24-Turquoise



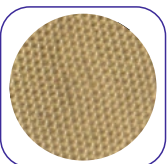
25-F.Green



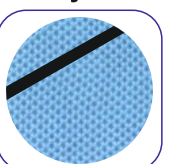
11-Black



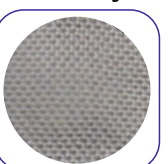
13-Beige



14-Sky Blue



16-Grey



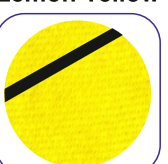
17-Red



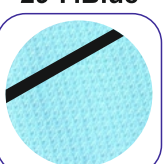
19-Orange



Lemon Yellow



29-P.Blue





Quality * 573
GSM * 230
Grey with Tipping
100% Cotton Fabric

Colors Options

1-Navy



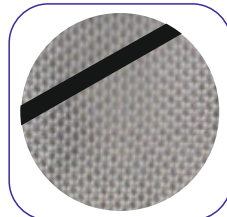
2-White



2-White



10-G Melange



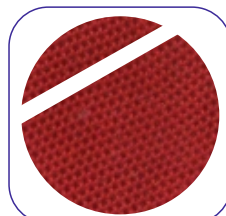
11-Black



11-Black



17-Red





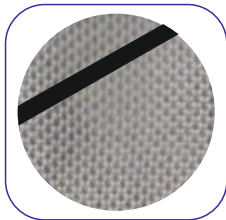
Quality * One Plus
Royal with Whit Tipping
Dry Fit Fabric

Colors Options

1-Navy



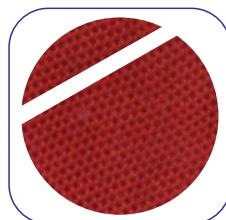
10-G Melange



11-Black



17-Red



18-Royal



24-Turquoise

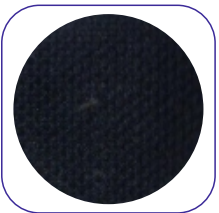




Design - 9.5
GSM - 160
Quality - 100% Cotton
Colors - 6

Color Options

1-Navy



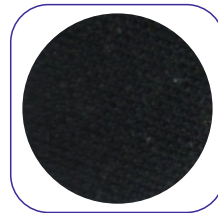
2-White



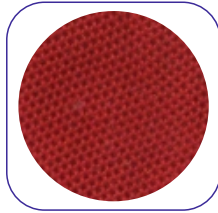
3-A Melange 10-G Melange



11-Black



17-Red





Design # 424
GSM - 180
Quality - 100% Cotton
Colors - 5

Color Options

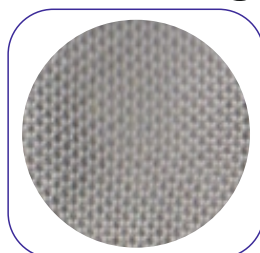
1-Navy



2-White



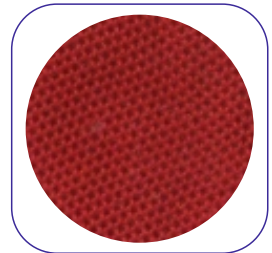
10-G Melange



11-Black



17-Red





Design - **Bio Wash**
GSM - 160
Quality - 100% Cotton
Colors - 23

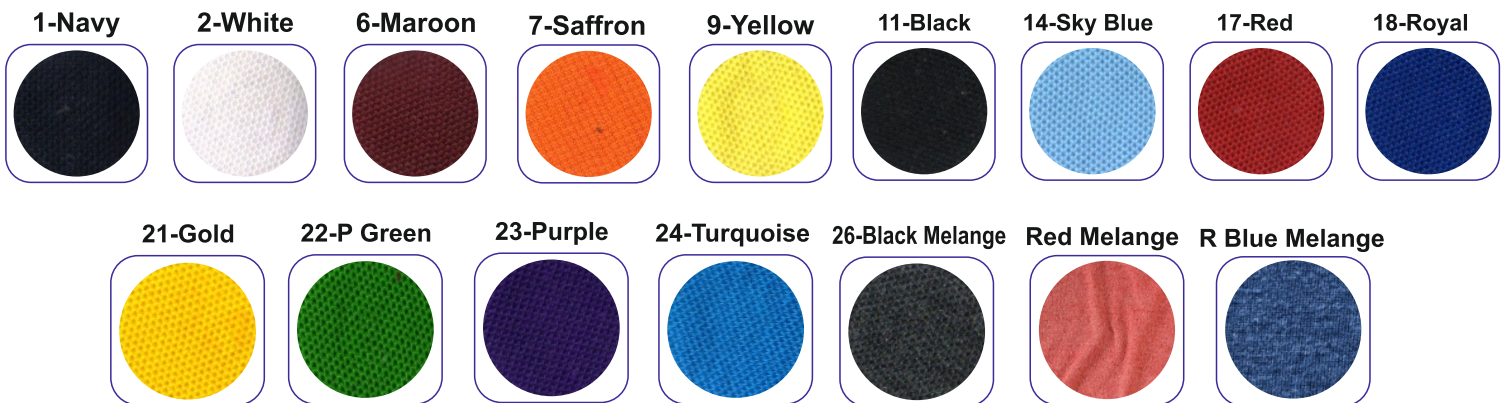
Color Options

1-Navy	2-White	4-B Green	5-Sea Green	6-Maroon	7-Saffron	9-Yellow	10-G Melange
11-Black	14-Sky Blue	15-Coffee	17-Red	18-Royal	20-Mustard	33-Olive	
21-Gold	22-P Green	23-Purple	24-Turquoise	25-F.Green	26-Black Melange	27-Idea Yellow	28-Pink



Design - 10
Quality - PolyCotton
Colors - 16

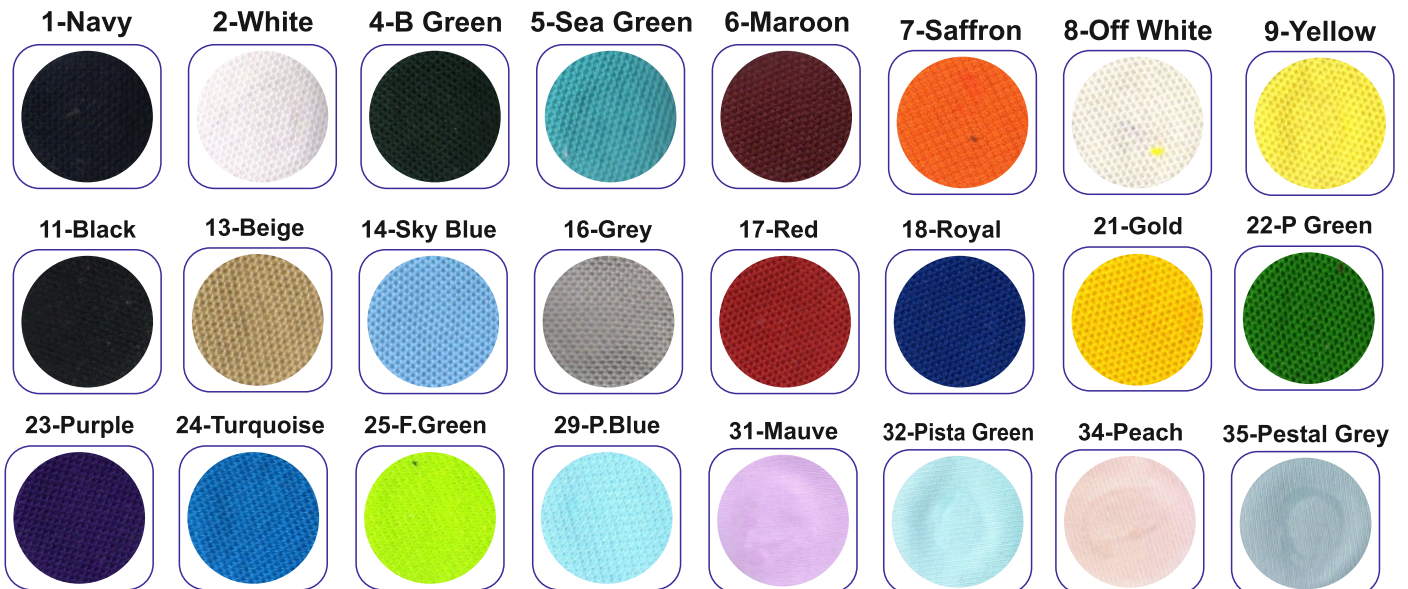
Color Options





Design # 3600
Quality - Dri Fit Fabric
Neck - Round Neck
Colors- 24

Color Options





Design - Sarina
GSM - 120
Quality- Dri Fit
Colors - 12

Color Options

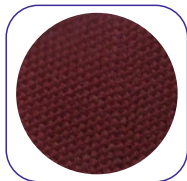
1-Navy



2-White



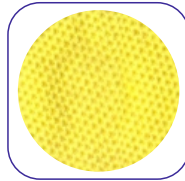
6-Maroon



7-Saffron



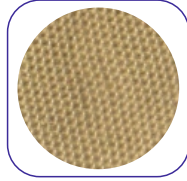
9-Yellow



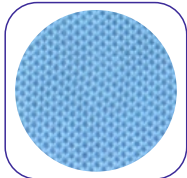
11-Black



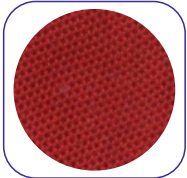
13-Beige



14-Sky Blue



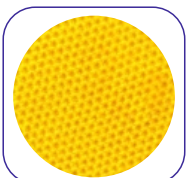
17-Red



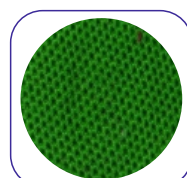
18-Royal



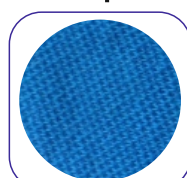
21-Gold



22-P Green



24-Turquoise





Design - **Pineapple**
GSM - 150
Quality - Dri Fit
Colors - 9

Color Options

1-Navy



2-White



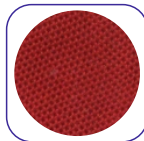
6-Maroon



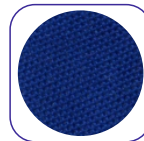
11-Black



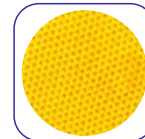
17-Red



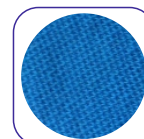
18-Royal



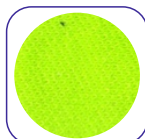
21-Gold



24-Turquoise



25-F.Green





**Design - Hoodie, Pocket
- Without Zip**

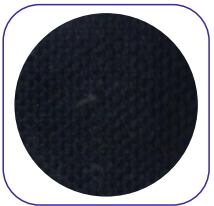
Quality - Poly Cotton

GSM - 300

Colors - 10

Color Options

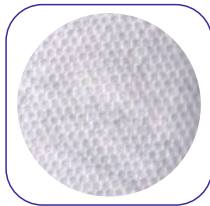
1-Navy



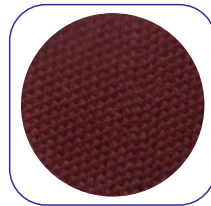
2-White



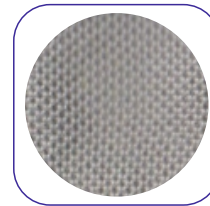
3-A Melange



6-Maroon



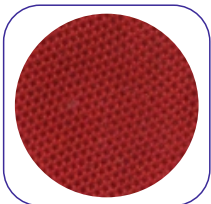
10-G Melange



11-Black



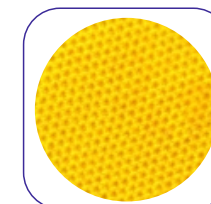
17-Red



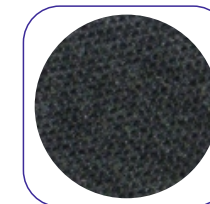
18-Royal



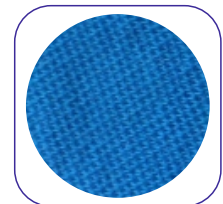
21-Gold



26-Black Melange



24-Turquoise





Design - **400 - Hoodies**
Pocket wt.Zip

Quality - Poly Cotton

GSM - 320

Colors - 10

Color Options

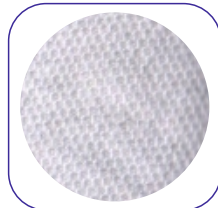
1-Navy



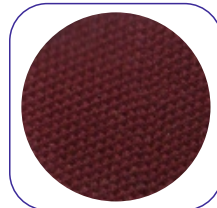
2-White



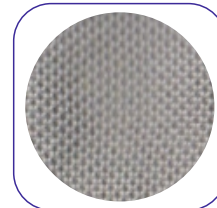
3-A Melange



6-Maroon



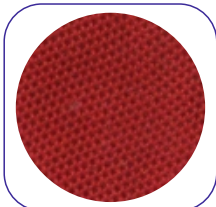
10-G Melange



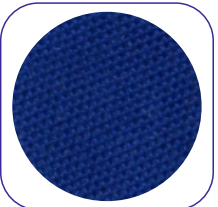
11-Black



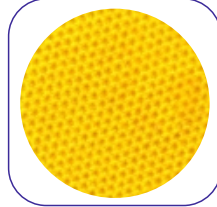
17-Red



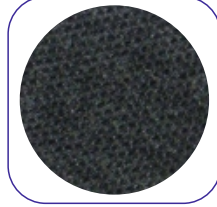
18-Royal



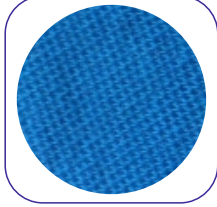
21-Gold



26-Black Melange



24-Turquoise

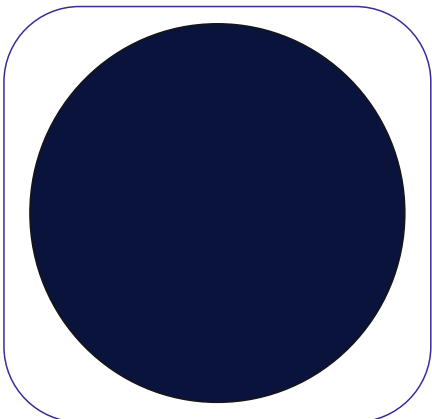




Design - **Spandex
With Zip and Pocket**
Quality - Spun
Colors - 3

Color Options

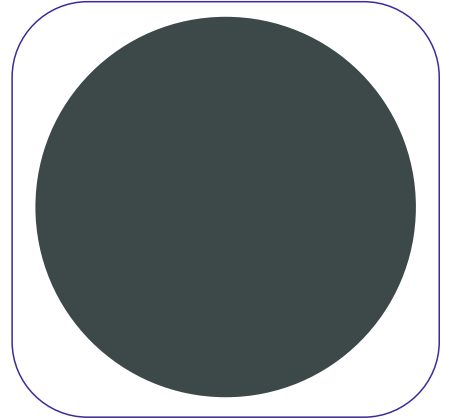
1-Navy



11-Black



Dark Grey





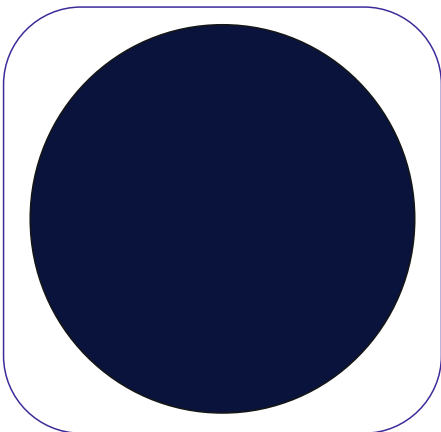
Design - **Spandex Track Pant**
{Stretch} wt Draw Strings
and 2 pockets

Quality - Spun Fabric

Colors - 3

Color Options

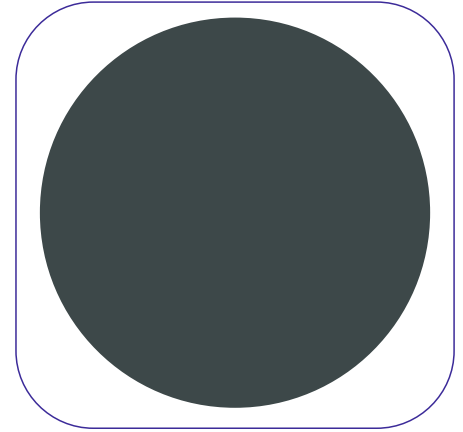
1-Navy



11-Black



Dark Grey





Color Options

1-Navy



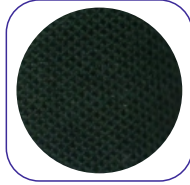
2-White



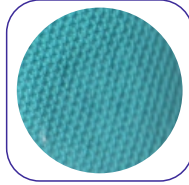
3-A Melange



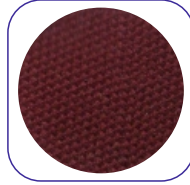
4-B Green



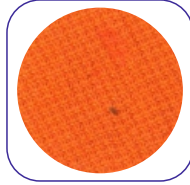
5-Sea Green



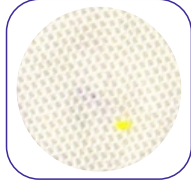
6-Maroon



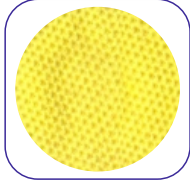
7-Saffron



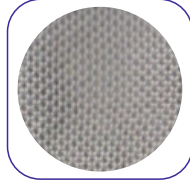
8-Off White



9-Yellow



10-G Melange



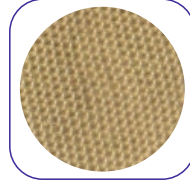
11-Black



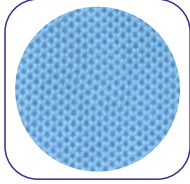
12-Wine



13-Beige



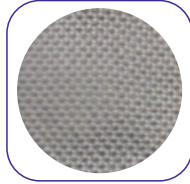
14-Sky Blue



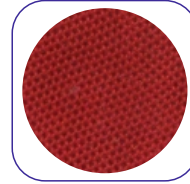
15-Coffee



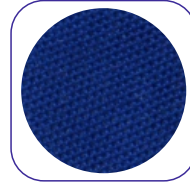
16-Grey



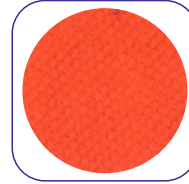
17-Red



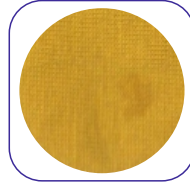
18-Royal



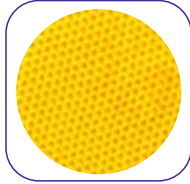
19-Orange



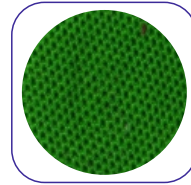
20-Mustard



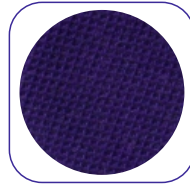
21-Gold



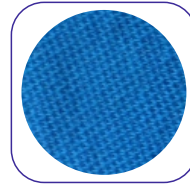
22-P Green



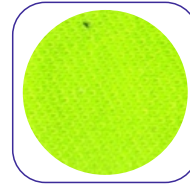
23-Purple



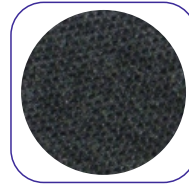
24-Turquoise



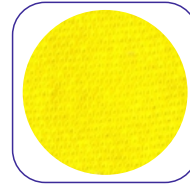
25-F.Green



26-Black Melange



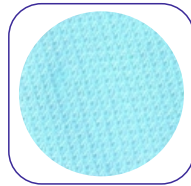
27-Idea Yellow



28-Pink



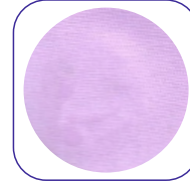
29-P.Blue



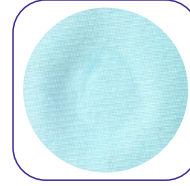
30-Lavender



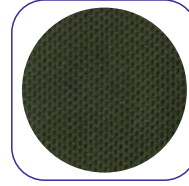
31-Mauve



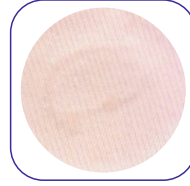
32-Pista Green



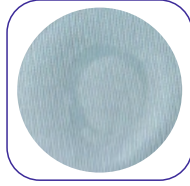
33-Olive



34-Peach



35-Pestal Grey





Size Details

size variation of + of - 1/2 inches may be there.

size	length	shoulder	chest	size in inches
Ladies				
xs	22	14	16	32
small	23	14.5	17	34
med	24	15	18	36
large	25	15.5	19	38
xlarge	26	16	20	40
xxlarge	27	17	21	42
mens				
small	26	17.5	19	38
medium	27	18.5	20	40
large	28	19.5	21	42
xlarge	29	20.5	22	44
xxlarge	30	21.5	23	46
3xl	31	22.5	24	48
4xl	32	23.5	25	50

Note:- All Measurements in Inches

**OFFICE :- # 9/1, MONTIETH ROAD, EGMORE, CHENNAI - 600 008.
LANDLINE :- 044 4215 3987.
WEBSITE :- WWW.CJ7UNIFORMS.COM.
EMAIL :- SUPPORT@CJ7UNIFORMS.COM**